



INDOFINE Chemical Company, Inc.

121 Stryker Lane, Bldg. 30, Suite 1 • Hillsborough, NJ 08844 • U.S.A.

Phone: (908) 359-6778 • FAX: (908) 359-1179

website: www.indofinechemical.com

e-mail: chemical@indofinechemical.com

CERTIFICATE OF ANALYSIS

Catalog Number: 22-221

Product Name: **4,4'-DIMETHOXY-2'-HYDROXYCHALCONE**

Lot Number: 99075

Chemical Formula: C₁₇H₁₆O₄

Molecular Weight: 284.32

Melting Point: 115-117°C

Appearance: Yellow powder

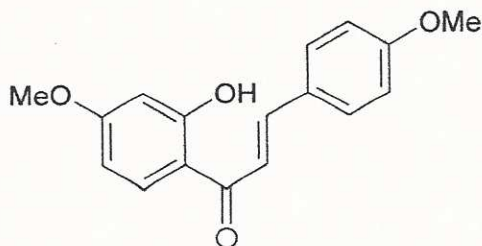
Solubility: Soluble in Chloroform

TLC: Hexane : Ethyl acetate (7:3)

NMR Spectrum: Enclosed (Confirms to the structure)

Storage: Cool dry place

Purity HPLC): 99.50%





INDOFINE Chemical Company, Inc.

121 Stryker Lane, Bldg. 30, Suite 1 • Hillsborough, NJ 08844 • U.S.A.

Phone: (908) 359-6778 • FAX: (908) 359-1179

website: www.indofinechemical.com

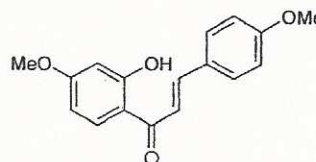
e-mail: chemical@indofinechemical.com

HPLC ANALYSIS

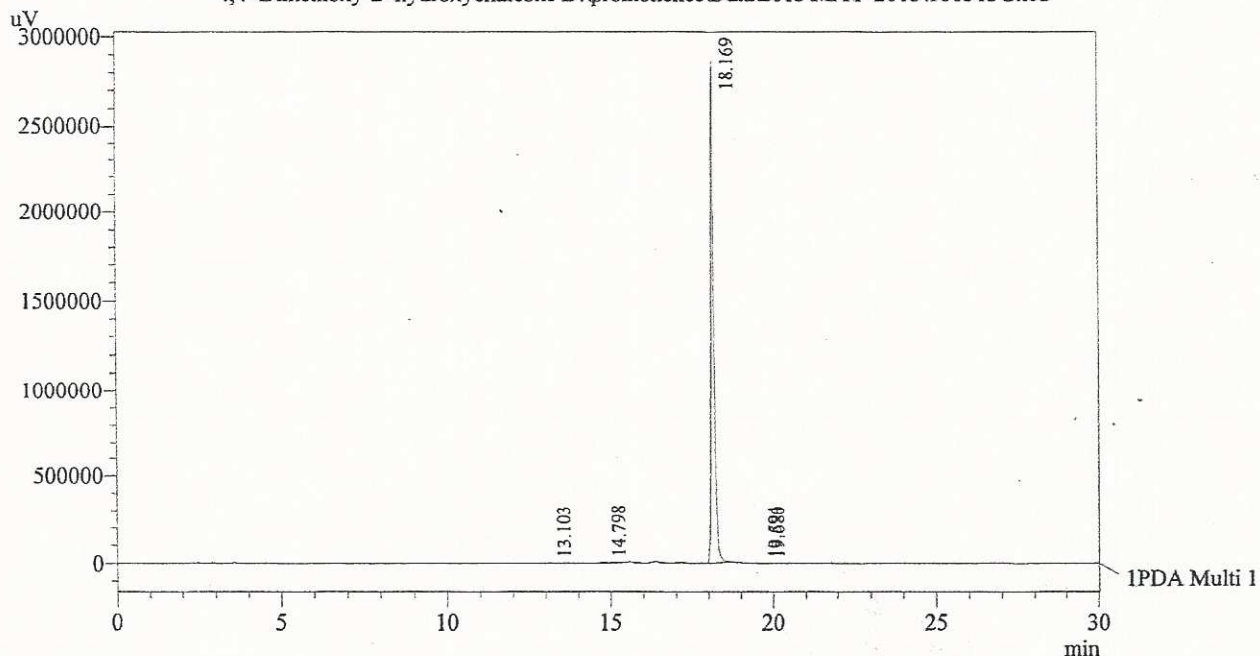
Acquired by : Sanjeev
Sample Name : 4,4'-Dimethoxy-2'-hydroxychalcone
Sample ID : Lot No:- 99075
Injection Volume : 20 uL
Data Filename : 100513G.lcd
Method Filename : Linear Gradient.M.lcm

Catalog No.: 22-221
Product name: 4,4'-Dimethoxy-2'-hydroxychalcone
Lot No.: 99075

Column : LUNA C-18(2), (250mm x4.6mm 5.0µ)
Flow : 1.000 mL/min.
Mobile Phase : A(Water) B(Acetonitrile)
0.01 90 10
12.0 10 90
20.0 10 90
23.0 90 10
30.0 90 10
Diluent : Acetonitrile



Chromatogram
4,4'-Dimethoxy-2'-hydroxychalcone D:\promonence\Data\2013\MAY-2013\100513G.lcd

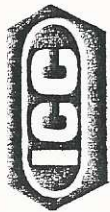


1 PDA Multi 1 / 230nm 4nm

PeakTable

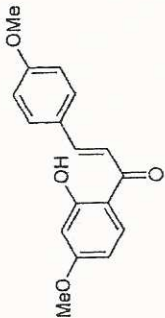
PDA Ch1 230nm 4nm

Peak#	RT	Name	Ret. Time	Area	Area %	Relative Retention Time
1	RT:13.103		13.103	37547	0.20	0.72
2	RT:14.798		14.798	43501	0.23	0.81
3		4,4'-Di-OMe-2'-OH-chalcone	18.169	18467333	99.50	1.00
4	RT:19.594		19.594	6276	0.03	1.08
5	RT:19.680		19.680	5740	0.03	1.08
Total				18560398	100.00	



INDOFINE Chemical Company, Inc.
121 STRYKER LANE
BLDG. 30, SUITE 1
HILLSBOROUGH, NJ 08844

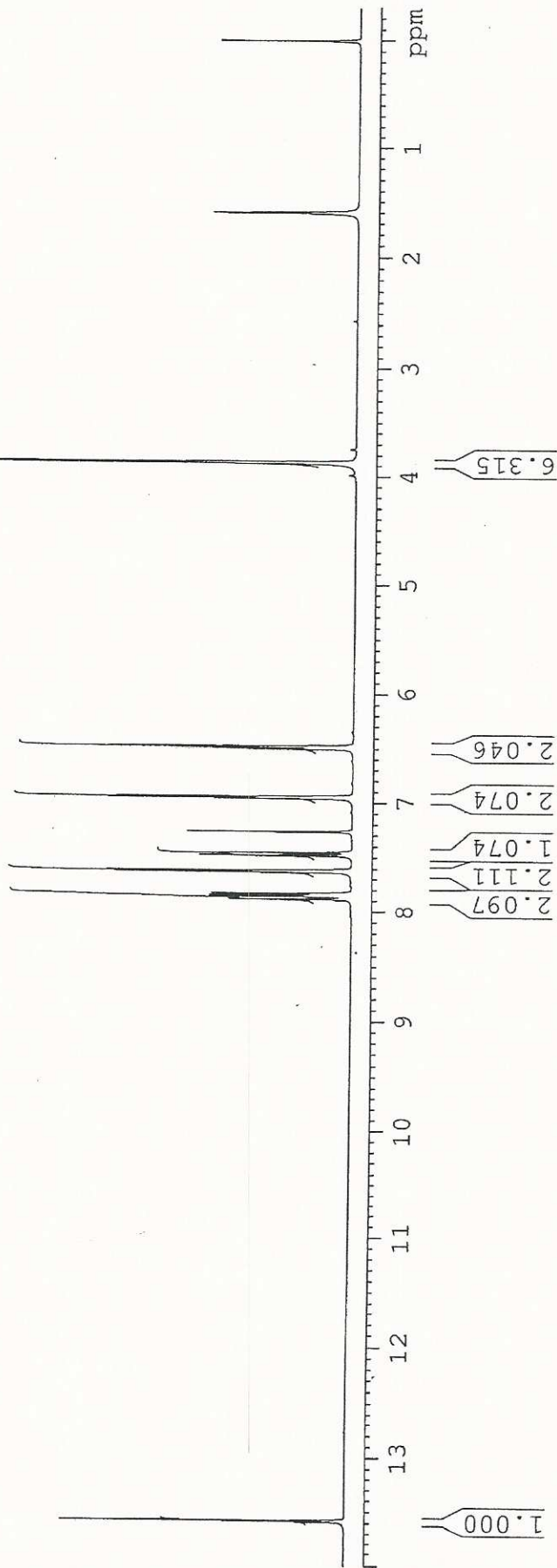
Catalog No.: 22-221
Product name: 4,4'-Dimethoxy-2'-hydroxychalcone
Lot No.: 99075



1H IN CDCL3
AVANCE-600

SOLVENT CDCL3 8
NS 0
DS 0
SWH 9803.922 Hz
FIDRES 0.326819 Hz
AQ 1.5299480 sec
RG 22.6
DW 51.000 usec
DE 6.00 usec
TE 298.2 K
D1 1.50000000 sec
TD0 1

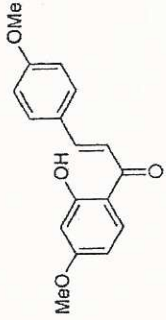
==== CHANNEL f1 =====
NUC1 1H
P1 7.50 usec
PL1 2.60 dB
PL1W 6.62584448 W
SFO1 600.3345228 MHz
SI 32768
SF 600.3300135 MHz
WDW EM
SSB 0
LB 0.30 Hz
GB 0
PC 1.00





INDOFINE Chemical Company, Inc.
121 STRYKER LANE
BLDG. 30, SUITE 1
HILLSBOROUGH, NJ 08844

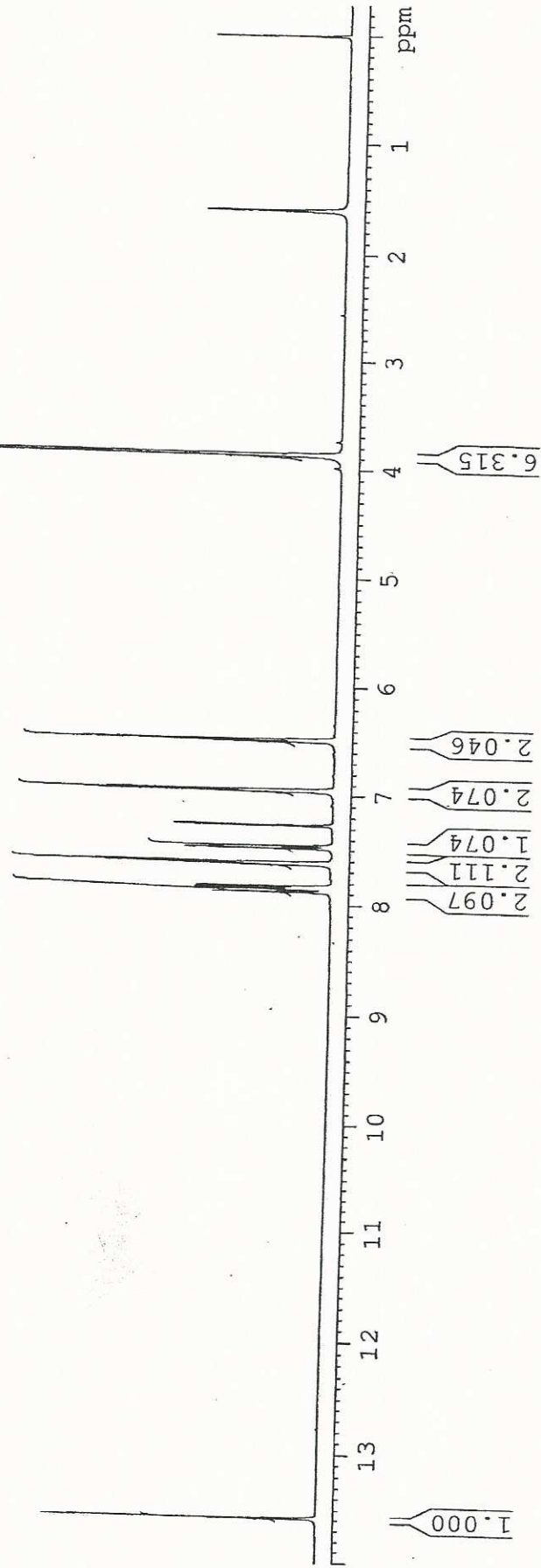
Catalog No.: 22-221
Product name: 4,4'-Dimethoxy-2'-hydroxychalcone
Lot No.: 99075



1H IN CDCL3
AVANCE-600

SOLVENT CDCL3
NS 8
DS 0
SMH 9803.922 Hz
FIDRES 0.326819 Hz
AQ 1.5299480 sec
RG 22.6
DW 51.000 usec
DE 6.00 usec
TE 298.2 K
D1 1.50000000 sec
TD0 1

===== CHANNEL f1 =====
NUC1 1H
P1 7.50 usec
PL1 2.60 dB
PL1W 6.62584448 W
SF01 600.3345228 MHz
SI 32768
SF 600.3300135 MHz
WDW EM
SSB 0
LB 0.30 Hz
GB 0
PC 1.00





INDOFINE Chemical Company, Inc.
121 STRYKER LANE
BLDG. 30, SUITE 1
HILLSBOROUGH, NJ 08844

Catalog No.: 22-221
Product name: 4,4'-Dimethoxy-2'-hydroxychalcone
Lot No.: 99075

